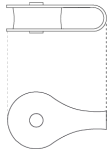




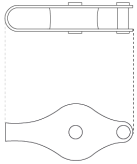
VERTICAL FIXING KIT

INSTRUCTION MANUAL

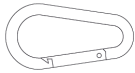
The vertical fixing kits are our more refined adjustable rope kit. The kit has 3 spliced pieces of rope, splicing the rope to fixings (as shown below). The pulley system on this kit runs vertically down your post / wall, which allows for the Shade Sail to be tensioned closer to your desired anchorage point, whilst also providing a connection that can be attached and removed more easily. This means that this kit is suitable for Shades that are being erected on a daily basis.



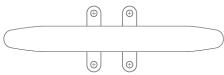
1 x Pulley Block 2 (*PLAIN BLOCK*)
ATTACHED TO ROPE 2
KSFXT2



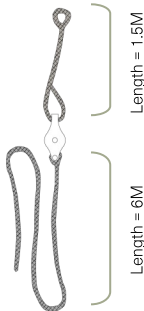
1 x Pulley Block 1 (*WITH BECKETT*)
ATTACHED TO ROPE 1
KSFXT1



1 x Carbine Hook
KSFXT9060



1 x Cross End Cleat
KSFXT414D

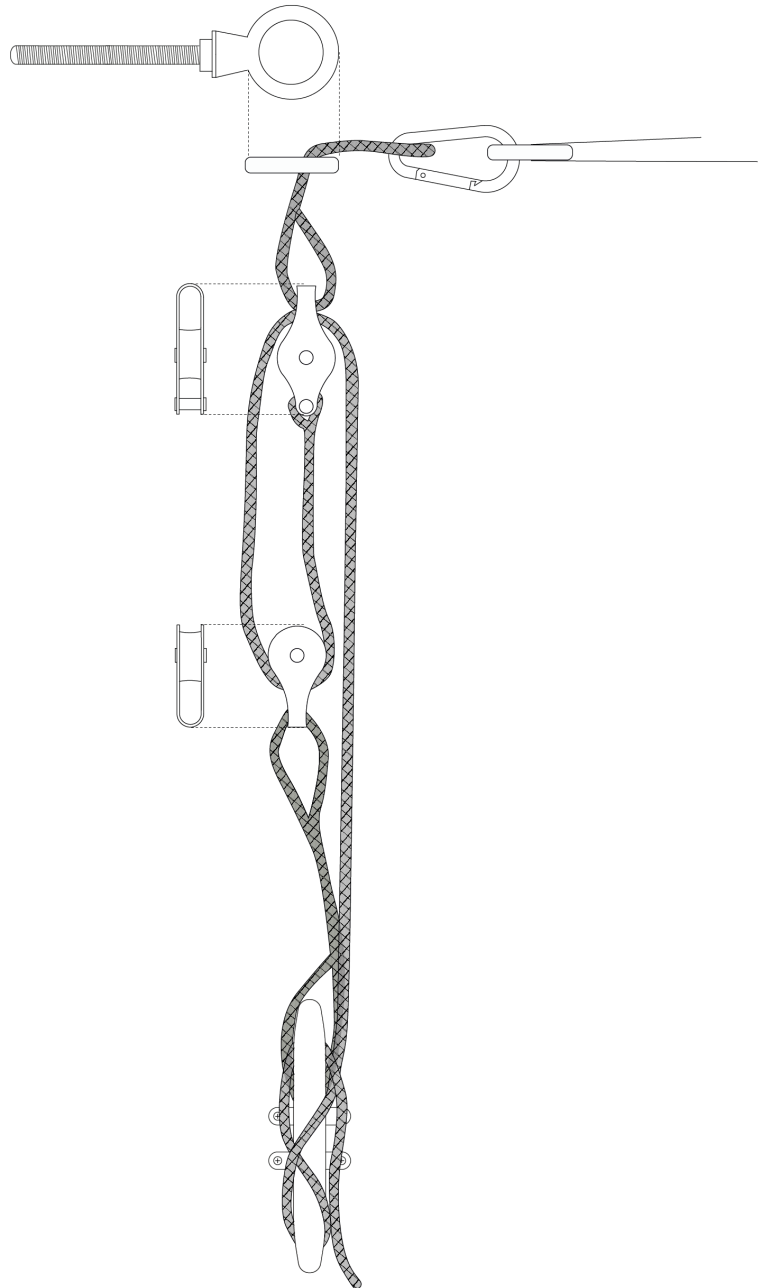


Length = 1.5M



Length = 6M

330mm finished inc. pulley



3 x 6mm Braided Rope

CORDLESS DRILL



HANDHELD PLIERS

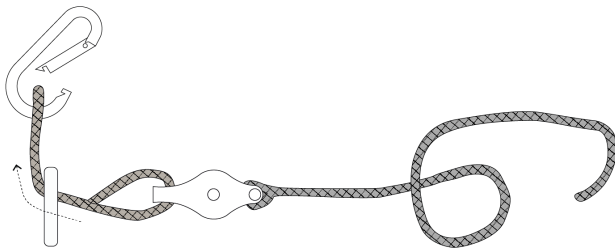


SCREW DRIVER



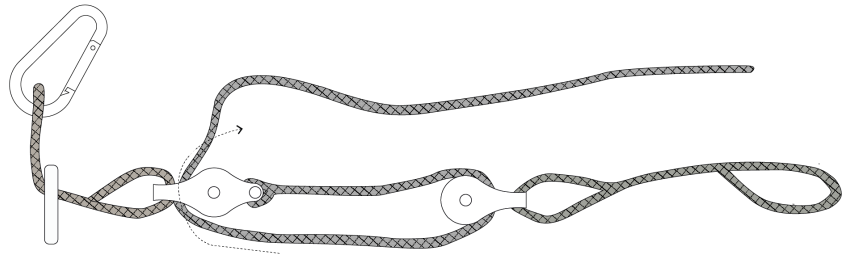
-STEP 1-

Thread rope 1 through anchorage fixing and attach carabine hook to loop, holding the rope in place.



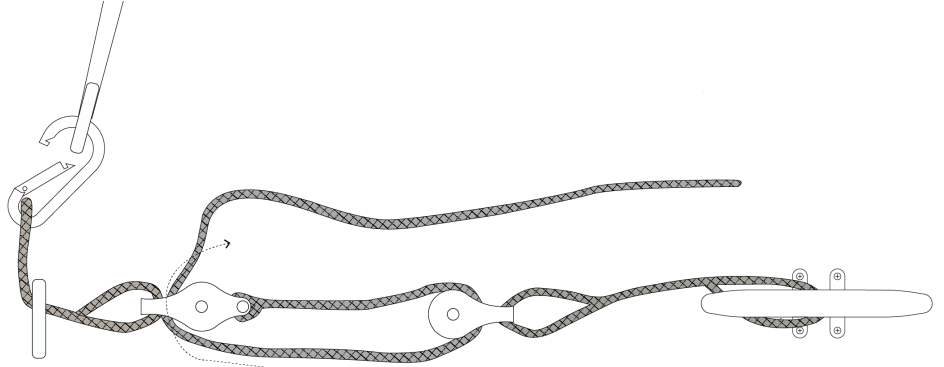
-STEP 2-

Thread block 2 onto rope one. Then take end of rope one back up and through pulley.



-STEP 3-

Fix cross end cleat to chosen point trapping loop on rope 2 between cleat and surface.



-STEP 4-

Secure Shade Sail to carabine hook, then pull on loose end of rope 1 to tension shade. Secure in a figure of 8 around cleat.

