



HORIZONTAL FIXING KIT

KSFx50PL

INSTRUCTION MANUAL

The Sail Loft, Unit 16, Sandford Lane Industrial Estate, Wareham, Dorset BH20 4DY

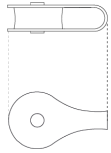
Phone: +44 (0)1929 554308
www.shade-solutions.com



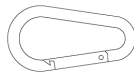
Email: info@kempsails.com
www.kempsails.com

HORIZONTAL FIXING KIT

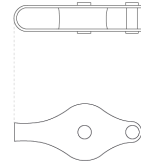
The horizontal fixing kits are simple method of rigging and remove your Shade Sail easily and on a daily basis if required. Generally the anchor points are set further away than the usual 240mm. The kit is made up of the components below. Post and Wall anchor fittings are not included in the adjustable fixing kits, and can be purchased separately online.



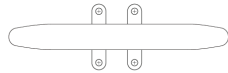
1 x Pulley Block 2 (*PLAIN BLOCK*)
KSFXTB2



2 x Carbine Hook
KSF9060



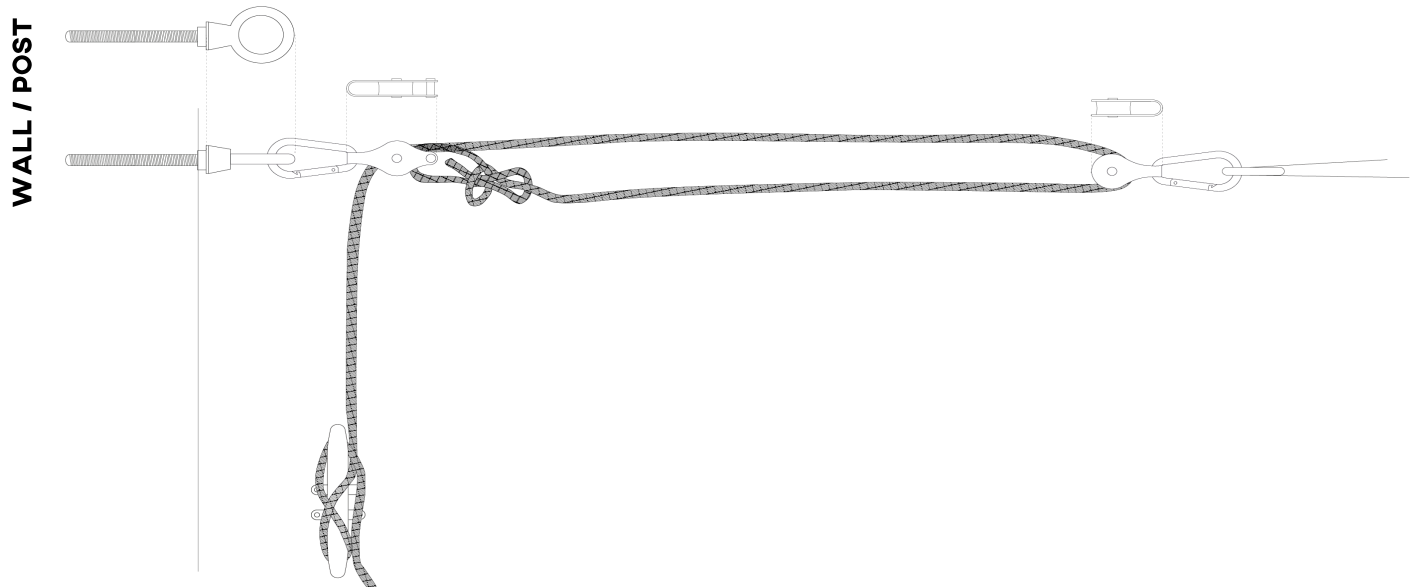
1 x Pulley Block 1 (*WITH BECKET*)
KSFXTB1



1 x Cross End Cleat
KSF414D



1 x 6mm Braided Rope
KSF5MWW



HOW TO FIT

CORDLESS DRILL



HANDHELD PLIERS

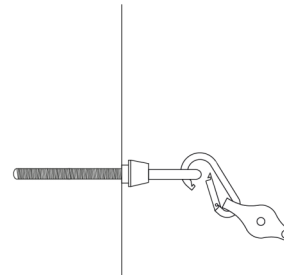
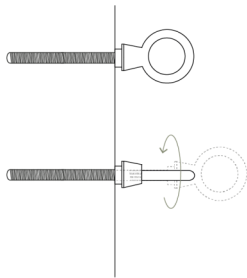


SCREW DRIVER



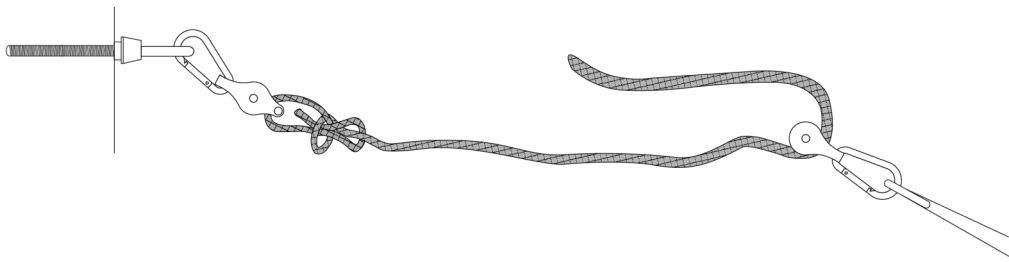
- STEP 1 -

Attach 1 x Carbine Hook and 1 x Pulley Block 1
to anchor point



- STEP 2 -

Tie rope onto the becket of Pulley Block 1 (IDEALLY BOWLINE) and thread
loose tail through Pulley Block 2.



- STEP 3 -

Thread loose tail back through Pulley Block 1. Apply tension the shade by pulling the rope through
the pulleys and tie off the rope around the Cross end Cleat fixed lower down on the post or wall.
Tension a little at a time working on each shade corner until even tension is gained all round.

